

**GENERAL TECHNICAL CHARACTERISTICS**

Reference standards :	IEC 61071-60068
Dielectric :	Polypropylene film
Construction :	Metallized film with internal series connection , Dry construction filled by solid resin,Non-inductive type
Coating :	Aluminum case
Leads:	Threaded bold, M10

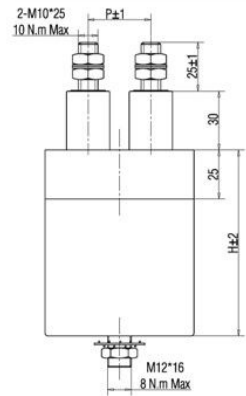
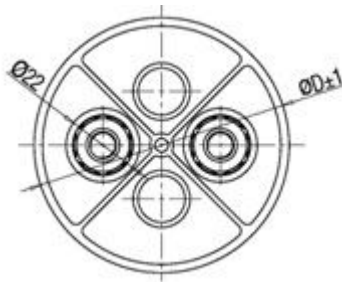
**ELECTRICAL CHARACTERISTICS**

Operating temperature range :	- 40 to + 85 °C (case)
Capacitance :	0.22 to 11.0μF
Rated Voltage :	2400 to 8000 VDC
Tolerance :	± 5% , ± 10%
Dissipation factor:	≤5×10 <sup>-4</sup> Measured at 1000±20 Hz and 25±5°C
Life expectancy :	100,000 hours at Un and 70 °C (Hot-spot temperature)

**TEST METHODS AND PERFORMANCES**

Dielectric strength:	1.5Un (DC) applied for 10s at 25±5°C (1 minute for type test)
Test voltage terminal to case :	(2xUrms+1000) Vac, Min 3000Vac 60s at 25 °C
Insulation resistance :	10,000 s but need greater than 10,000MΩ

**▲OUTLINE DRAWING**



**▲Part Numbering System**

170	SKH	104	*	1
Voltage	Type	Capacitance	Tolerance	Size
224=700vdc	SKH	104=0.1uf	K= ±10%	1
236=1000vdc		105=1uf	J= ±5%	2
248=1200vdc		106=10uf		

▲Electrical specifications, ordering codes

Ordering Code	Cap (μF)	Dimension (mm)			I <sub>rms</sub> @25°C @10kHz (A)	du/dt (v/μs)	I <sub>peak</sub> (A)	L <sub>s</sub> (nH)	ESR@10k Hz(mΩ)
		D	H	P					
<b>Un 2400VDC, Urms 1200V, Upeak 1680V, Us 3600V</b>									
224SKH155K1	1.5	76	70	32	35	800	1200	< 50	1.9
224SKH225K1	2.2	76	70	32	40	800	1760	< 50	1.4
224SKH305K1	3.0	86	70	32	45	800	2400	< 50	1.1
224SKH475K1	4.7	76	125	32	55	800	3760	< 50	0.8
224SKH605K1	6.0	86	125	32	65	800	4800	< 50	0.7
224SKH116K1	11	116	130	50	80	800	8800	< 50	0.5
<b>Un 3600VDC, Urms 1800V, Upeak 2520V, Us 5400V</b>									
236SKH105K1	1.0	76	95	32	32	1000	1000	< 50	2.7
236SKH155K1	1.5	76	95	32	40	1000	1500	< 50	1.9
236SKH205K1	2.0	86	95	32	45	1000	2000	< 50	1.5
236SKH305K1	3.0	76	175	32	50	1000	3000	< 50	1.1
236SKH405K1	4.0	86	175	32	65	1000	4000	< 50	0.9
236SKH755K1	7.5	116	180	50	80	1000	7500	< 50	0.6
<b>Un 4800VDC, Urms 2400V, Upeak 3360V, Us 7200V</b>									
248SKH684K1	0.68	76	120	32	30	1200	816	< 50	3.8
248SKH105K1	1	76	120	32	38	1200	1200	< 50	2.7
248SKH155K1	1.5	86	120	32	42	1200	1800	< 50	1.9
248SKH225K1	2.2	76	225	32	48	1200	2640	< 50	1.4
248SKH305K1	3	86	225	32	60	1200	3600	< 50	1.1
248SKH565K1	5.6	116	230	50	80	1200	6720	< 50	0.7
<b>Un 6000VDC, Urms 3000V, Upeak 4200V, Us 9000V</b>									
260SKH684K1	0.68	76	145	32	32	1500	1020	< 50	3.8
260SKH824K1	0.82	76	145	32	37	1500	1230	< 50	3.2
260SKH125K1	1.2	86	145	32	40	1500	1800	< 50	2.3
260SKH185K1	1.8	76	275	32	45	1500	2400	< 50	1.6
260SKH205K1	2.0	76	275	32	47	1500	2800	< 50	1.7
260SKH245K1	2.4	86	275	32	60	1500	3600	< 50	1.3
260SKH455K1	4.5	116	275	50	80	1500	6750	< 50	0.8
<b>Un 8000VDC, Urms 4000V, Upeak 5600V, Us 12000V</b>									
280SKH224K1	0.22	76	135	32	33	3000	660	< 50	5.8
280SKH334K1	0.33	76	135	32	40	3000	990	< 50	4.0
280SKH474K1	0.47	86	135	32	45	3000	1410	< 50	2.9
280SKH684K1	0.68	76	260	32	50	3000	2040	< 50	2.1
280SKH105K1	1.0	86	260	32	60	3000	3000	< 50	1.5
280SKH185K1	1.8	116	260	50	80	3000	5400	< 50	1.0

\*Special design available to meet your requirements.