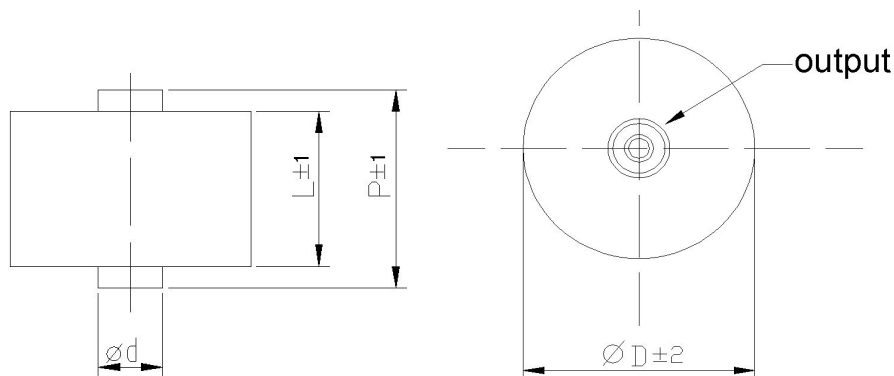


GENERAL TECHNICAL CHARACTERISTICS	
Reference standards :	IEC 61071 60068 60384
Dielectric :	Polypropylene film
Construction :	Extended metallized film with internal series connection. Dry construction, Non-inductive type.
Coating :	Polyester tape wrapping, UL94V-0 resin end fill.
Leads:	Threaded insert M6 or M8 filled with resin
ELECTRICAL CHARACTERISTICS	
Operating temperature range :	- 40 to + 85 °C (case)
Capacitance :	0.47 to 12 μ F
Rated Voltage :	400 to 700 VAC
Tolerance :	\pm 5% , \pm 10%
Dissipation factor:	5 \times 10 ⁻⁴ Measured at 1000 \pm 20 Hz and 25 \pm 5°C
Life expectancy :	100,000 hours at Un and 70 °C (Hot-spot temperature).
TEST METHODS AND PERFORMANCES	
Dielectric strength:	1.5Un (DC) applied for 10s at 25 \pm 5°C
Test voltage terminal to case :	3kVAC/50Hz for 60s
Insulation resistance :	30000s but need not exceed 30G Ω (typical value), after 1 minute of electrification at 100Vdc (25 \pm 5°C)



▲Outline drawing



M6	M8
d= 15mm	d= 18mm

▲Part Numbering System

170	DHK	474	#	37	P
Voltage	Type	Capacitance	Tolerance	Length	Screws
170=700vac 150=500vac 140=400vac	DHK	474=0.47uf 475=4.7uf 476=47uf	J= \pm 5% K= \pm 10% M= \pm 20%	37=L=37mm 50=L=50mm	P=M6 Y=M8

▲Electrical specifications, ordering codes

Ordering Code	Cap (μF)	Urms (V.ac)	D (mm)	L (mm)	P (mm)	Output	du/dt (v/μs)	I _{rms@25°} C (A)	ESR@10kHz (mΩ)	R _{th} (k/w)
			Urms 700VAC		Un 2000VDC		Upeak 990V			
170DHK474#37P	0.47	700	42	37	48	M6	1180	35	1.4	11.6
170DHK105#40P	1.0	700	54	40	52	M6	1180	49	1.2	7.4
170DHK155#40Y	1.5	700	66	40	52	M8	1180	63	1.1	5.4
170DHK205#40Y	2.0	700	76	40	52	M8	1180	76	1.0	4.3
170DHK255#40Y	2.5	700	85	40	52	M8	1180	86	1.0	3.5
170DHK405#50Y	4.0	700	84	50	63	M8	830	86	1.1	3.1
			Urms 500VAC		Un 1200VDC		Upeak 710V			
150DHK105#37P	1.0	500	43	37	48	M6	650	41	1.4	11.5
150DHK205#40P	2.0	500	49	40	52	M6	560	48	1.3	8.5
150DHK305#40P	3.0	500	60	40	52	M6	560	61	1.2	6.3
150DHK405#40Y	4.0	500	59	40	52	M8	560	72	1.2	5.2
150DHK505#40Y	5.0	500	76	40	52	M8	560	81	1.0	4.2
150DHK605#40Y	6.0	500	83	40	52	M8	560	92	1.0	3.6
150DHK106#50Y	10	500	84	50	63	M8	480	95	1.3	3.2
			Urms 400VAC		Un 1000VDC		Upeak 565V			
140DHK155#37P	1.5	400	44	37	48	M6	530	42	1.2	12.0
140DHK205#40P	2.0	400	49	40	48	M6	530	49	1.2	9.0
140DHK305#40P	3.0	400	54	40	52	M6	490	56	1.0	7.3
140DHK405#40P	4.0	400	62	40	52	M6	490	67	1.0	6.0
140DHK605#40Y	6.0	400	76	40	52	M8	490	82	0.8	4.2
140DHK705#40Y	7.0	400	82	40	52	M8	490	91	0.9	3.7
140DHK126#50Y	12	400	82	50	63	M8	410	95	1.1	3.1

*Special design available to meet your requirements.